



# MRAP Cargo Nets



Joint MRAP Vehicle Program  
Systems Engineer



Unclassified For Official Use Only



# MaxxPro Base (Slide 1 of 2 Behind Driver Seat)

NSN: 3940-01-477-6758 Order Quantity of **1** nets.

4030-01-571-5005 Order Quantity of **5** seat hooks.

\*4030-01-477-0508 Order Quantity of 6 carbiner hooks

Recommend **1**, 48" x 54" cargo nets inside the MaxxPro Base.

**Install:** When facing the windshield, install 1 net behind the driver seat between the digirack and the crew seats.

**Top:** Behind the driver seat, attach 2 seat hooks to the 2 metal anchors on the roof, 1 seat hook on each anchor, 1 anchor is next to the digirack and 1 is next to the com radio.

**Bottom:** In the same area near the floor attach 3 seat hooks, 1 seat hook to the available area under crew seat, 1 seat hook to the metal anchor in the floor and 1 seat hook to the bottom of the digirack.

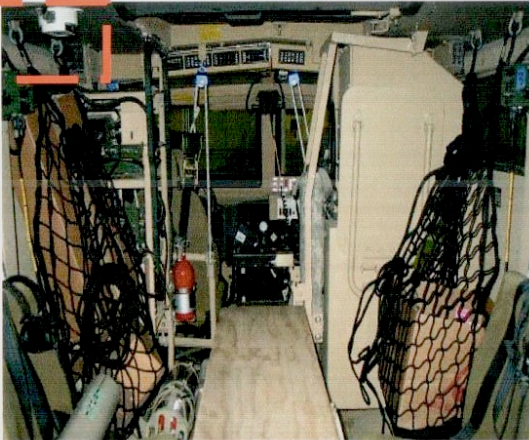
Holding the net with one of the 48" edges in your hands and the other 48" edge parallel to the floor, attach a carabiner hook at each of the 4 corners and one carabiner in the middle of the 48" edge parallel to the floor. Finish installation by attaching one carabiner hook to each of the 5 installed seat hooks.

Use the cinch mechanism to tighten the net around equipment placed in the net. Lift the locking lever slightly, to release the lever.

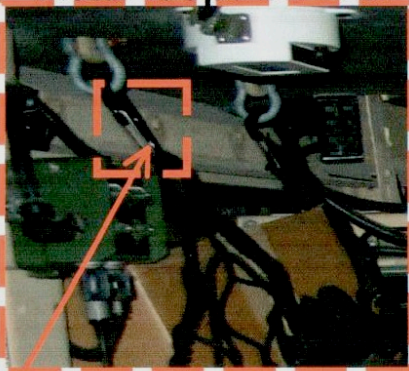
**DO NOT Store Any Items Under the Seats.**

**DO NOT exceed 110 Pound loads in the cargo nets, due to attachment and location.**

Unclassified For Official Use Only



**Metal loops on roof**

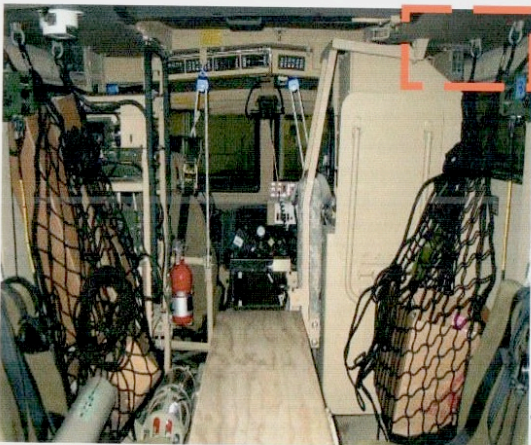


**Carabiner Hook**

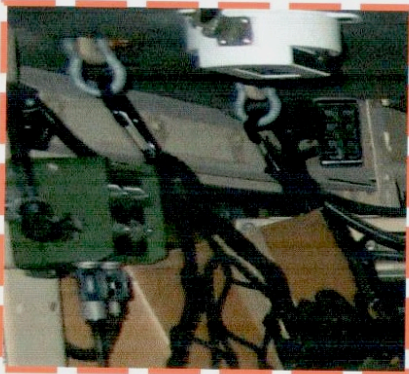
\* Applies to all Carabiner Hooks on all cargo Nets for each variant.



# MaxxPro Base (Slide 2 of 2 Behind TC Seat)



**Metal loops on roof**



NSN: 3940-01-477-6758 Order Quantity of **1** nets.

4030-01-571-5005 Order Quantity of **5** seat hooks.

Recommend **1**, 48" x 54" cargo nets inside the MaxxPro Base.

**Install:** When facing the windshield, install 1 net behind the Commander's seat between the HVAC and the crew seats.

**Top:** Behind the Commander's seat, attach 2 seat hooks to the 2 metal loops on the roof, 1 seat hook on each loop, 1 loop is next to the HVAC and 1 is next to the com radio.

**Bottom:** In the same area near the floor attach 3 seat hooks, 1 seat hook to the available area under crew seat, 1 seat hook to the metal loop in the floor and 1 seat hook to the bottom of the digirack.

Holding the net with one of the 48" edges in your hands and the other 48" edge parallel to the floor, attach a carabiner hook at each of the 4 corners and one carabiner in the middle of the 48" edge parallel to the floor. Finish installation by attaching one carabiner hook to each of the 5 installed seat hooks.

Use the cinch mechanism to tighten the net around equipment placed in the net. Lift the locking lever slightly, to release the lever.

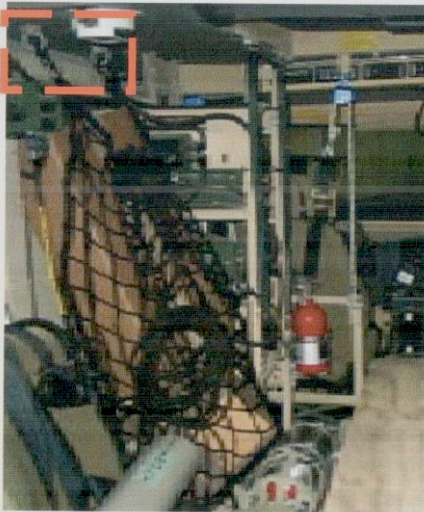
**DO NOT Store Any Items Under the Seats.**

**DO NOT exceed 110 Pound loads in the cargo nets, due to attachment and location.**

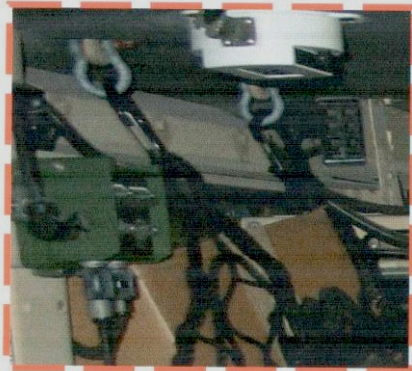
Unclassified For Official Use Only



# MaxxPro Plus



**Metal loops on roof**



NSN: 3940-01-477-6758 Order Quantity of **1** cargo net.

4030-01-571-5005 Order Quantity of **5** seat hooks.

4030-01-477-0508 Order Quantity of 6 carabiner hooks  
Recommend **1**, 48" x 54" cargo nets inside the MaxxPro Plus.

**Install:** When facing the windshield, install 1 net behind the driver seat between the digirack and the crew seats.

**Top:** Behind the driver seat, attach 2 seat hooks to the 2 metal anchors on the roof, 1 seat hook on each anchor, 1 loop is next to the digirack and 1 is next to the com radio.

**Bottom:** In the same area near the floor attach 3 seat hooks, 1 seat hook to the available area under crew seat, 1 seat hook to the metal anchor in the floor and 1 seat hook to the bottom of the digirack.

Holding the net with one of the 48" edges in your hands and the other 48" edge parallel to the floor, attach a carabiner hook at each of the 4 corners and one carabiner in the middle of the 48" edge parallel to the floor. Finish installation by attaching one carabiner hook to each of the 5 installed seat hooks.

Use the cinch mechanism to tighten the net around equipment placed in the net. Lift the locking lever slightly, to release the lever.

**DO NOT Store Any Items Under the Seats.**

**DO NOT exceed 110 Pound loads in the cargo nets, due to attachment and location.**

Unclassified For Official Use Only



# RG-31A2

NSN: 3940-01-477-6758 Order Quantity of **1** net.

5340-01-577-1137 Order Quantity of **1 Hook kit**. (6 each of Stryker hooks, bolts and washers.)

Recommend **1**, 48" x 54" inside the RG-31A2.

**Installation:** When facing the windshield, install net behind the driver seat, on the metal railings and between the fire extinguisher bottles and crew seats.

**Top Railing:** Attach 3 hook kits, 1 Stryker hook using 1 bolt and 1 washer at each end and in the middle of the top metal railing. Make sure the washer is between the railing and the Stryker hook.

**Bottom Railing:** Attach 3 hook kits, 1 Stryker hook using 1 bolt and 1 washer at each end and middle of the bottom metal railing. Make sure the washer is between the railing and the Stryker hook.

Attach 6 carabiner hooks, 1 to each corner of the net and 1 carabiner hook in the middle of each of the 54" sides of the net. With the cargo net positioned with the 54" sides parallel to the metal railings. Finish the installation by attaching 1 carabiner hook to each of the Stryker hooks.

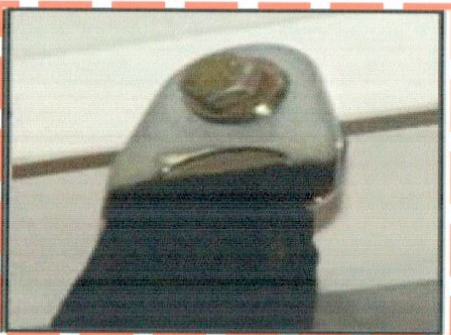
Use the cinch mechanism to tighten the net around equipment in the cargo net. Lift the locking lever slightly, to release the lever.

**DO NOT Store Any Items Under the Seats.**

**DO NOT exceed 110 Pound loads in the cargo nets, due to attachment and location.**



**Stryker Hook**



Unclassified For Official Use Only



# RG-33L (Slide 1 of 2)

NSN: 3940-01-477-7081 Order Quantity of **2** Cargo Nets. Uses carabiner hooks included with cargo nets.

Recommend **2**, 36"x96" cargo nets can be installed inside of a RG-33L.

**NOTE: Cargo nets are used only to secure equipment in storage shelves of RG-33L.**

**Installation:** Standing inside the crew cab, looking at the front of the vehicle, behind the vehicle Commander's seat.

**Net #1:** When facing the wind shield, behind the TC seat, Lay one of the cargo nets with one of the 36" sides parallel to the seat bracket of seat 1 (seat closest to the TC seat) and the other 36" side parallel the bracket for seat 2 (seat in the middle of the right side). The 96" sides should then run parallel along the right side of the vehicle, between seat 1 and seat 2

Bracket of seat 1, Loop a corner of the cargo net through the top of the seat bracket. Use 1 carabiner hook to secure the loop around the top of the seat bracket. Loop the other corner of cargo net through the bottom of the seat bracket for seat1. Use 1 carabiner hook to secure the loop around the bottom of the seat bracket. Repeat for the other 36" side of this cargo net on the bracket for seat 2.

Use the cinch mechanism to tighten the net around equipment in the shelves. Lift the locking lever slightly, to release the lever.

**DO NOT Store Any Items Under the Seats.**

**DO NOT exceed 110 Pound loads in the cargo nets, due to attachment and location.**



Top of seat bracket

Seat Bracket

Bottom of seat bracket



Unclassified - For Official Use Only



# RG-33L (Slide2of2)

NSN: 3940-01-477-7081

Order Quantity of 2 Cargo Nets.

Uses carabiner hooks included with cargo nets.

Recommend 2, 36"x96" cargo nets can be installed inside of a RG-33L.

**NOTE: Cargo nets are used only to secure equipment in storage shelves of RG-33L.**

**Installation:** Standing inside the crew cab, looking at the front of the vehicle, behind the vehicle Commander's seat.

**Net #1:** When facing the wind shield, behind the TC seat, Lay one of the cargo nets with one of the 36" sides parallel to the seat bracket of seat 2 (seat in the middle of the right side) and the other 36" side parallel the bracket for seat 3 (seat closest to the rear door). The 96" sides should then run parallel along the right side of the vehicle, between seat 2 and seat 3

Bracket of seat 2, Loop a corner of the cargo net through the top of the seat bracket. Use 1 carabiner hook to secure the loop around the top of the seat bracket. Loop the other corner of cargo net through the bottom of the seat bracket for seat 2. Use 1 carabiner hook to secure the loop around the bottom of the seat bracket. Repeat for the other 36" side of this cargo net on the bracket for seat 3.

Use the cinch mechanism to tighten the net around equipment in the shelves. Lift the locking lever slightly, to release the lever.

**DO NOT Store Any Items Under the Seats.**

**DO NOT exceed 110 Pound loads in the cargo nets, due to attachment and location.**

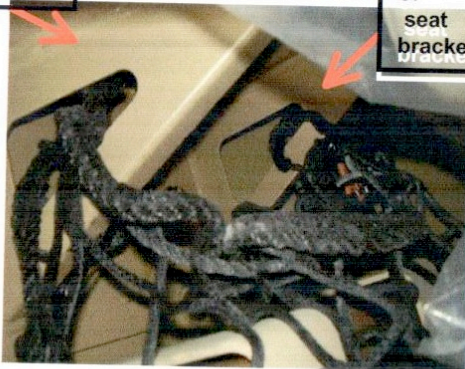
Unclassified For Official Use Only



Top of seat bracket

Seat Bracket

Bottom of seat bracket





## Caiman (1 of 2) Behind Commander Seat

NSN: 3940-01-578-1498 Order Quantity of 1 Kit.

Uses 2, 54" x 48" cargo nets, 12 carabiners and 3 D-rings to install on the floor of the crew cab.

**Installation:** Standing inside the crew cab, looking at the windshield in the space between the most rear crew seat and rear door, behind the commander, install 2- 48" x 54" cargo nets with 3 D-rings.

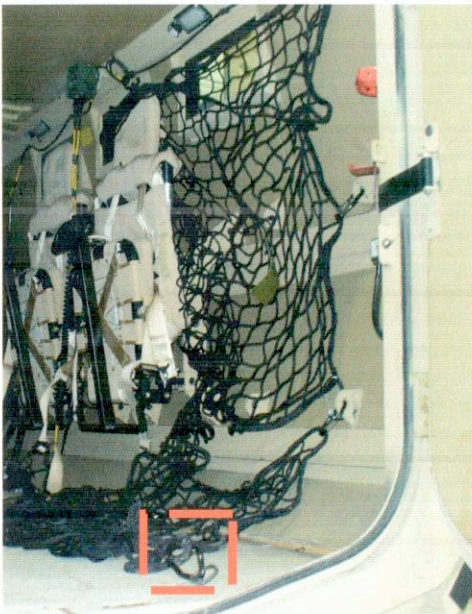
**Wall:** Area between rear crew seat and rear door behind commander. Hold 1-48" x 54" cargo net on the wall of the hull, with the 54" side vertical along the wall of the hull. Attach a carabiner hook to the cinch rope at each corner and one in the middle at the edge on the cargo net, along the 54" sides. Attach each of the carabiner hooks to the existing seat anchors on the wall.

**Floor:** Space between rear crew seat and rear door behind commander. Attach 3 D-rings to the predrilled holes on the floor. Lay 1-48" x 54" cargo net onto the floor of the of the hull, with the 48" side along the wall of the hull. Attach 6 carabiner hooks to the cargo net, 1 to the cinch rope at each corner and 1 in the middle on both of the 48" sides. Then, attach the 3, carabiner hooks to the 3 D-rings on the floor and 3 carabiners to the lower seat anchors on the wall.

Use the cinch mechanism to tighten the net around equipment placed under the nets. Lift the locking lever slightly, to release the lever.

**DO NOT Store Any Items Under the Seats.**

**DO NOT exceed 110 Pound loads in the cargo nets, due to attachment and location.**



**D-Ring on floor**



Unclassified For Official Use Only





## Caiman Roof (2 of 2)

Intersection 1    Intersection 2

Uses 1, 64" x 96" cargo net of kit 3940-01-578-1498 to install on the roof rack of the Caiman vehicle.



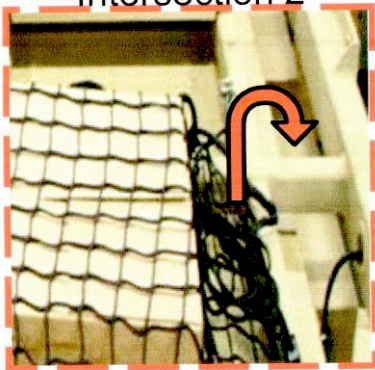
Uses 4 of the 6 carabiner hooks included with the cargo nets.

**Install:** Facing the engine of the vehicle, install one 64" x 96" cargo net on the roof of the Caiman. On the roof lay the cargo net on top of the roof rack with the 96" sides of the net parallel to the rear (rear door) and front (windshield) of the vehicle. Attach 1 carabiner hook to each corner of the net. Loosen the rope of the cargo net at the corners. At each of the 4 intersections of the roof rack, loop the rope around the bar of the mounting bracket and secure the rope to the cargo net with the carabiner hook.

Intersection 3    Intersection 4

To avoid the rope from slipping at each of the 4 corners of the roof rack, loop the rope diagonally across the intersection (shown by arrow at bottom left image).

Intersection 2



Use the cinch mechanism to tighten the net around equipment placed under the net. Lift the locking lever slightly, to release the lever.

**DO NOT Store Any Items Under the Seats.**

**DO NOT exceed 110 Pound loads in the cargo nets, due to attachment and location.**